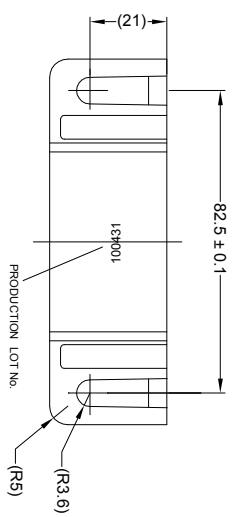
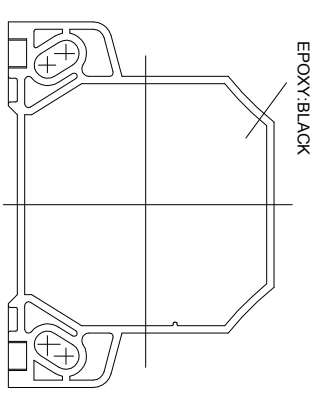
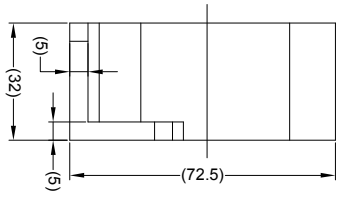
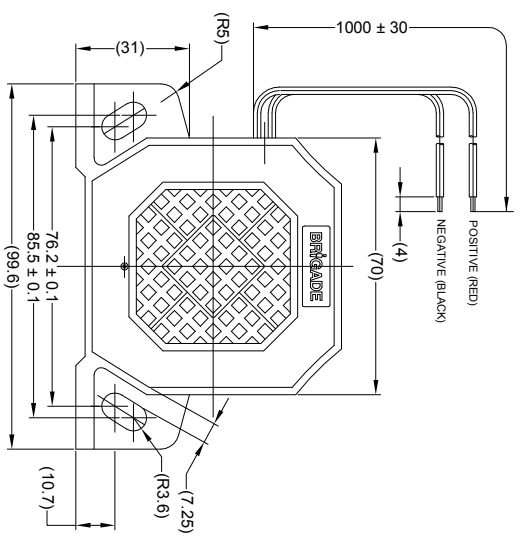
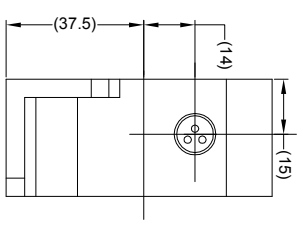


Revision Notes			
R1 - NOTES UPDATED TO INCLUDE LABEL DETAILS, STANDARDS UPDATED AS PER ECR CR- A274.			
AP.A: KILDA	Drawn/BATES	Checked/M BUTLER	Approved/SALITH
			Date: 28/08/14

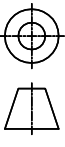


- SPECIFICATION:**
1. RATED VOLTAGE: 12-24 VOLTS DIRECT CURRENT (WORKING VOLTAGE RANGE 9 ~ 32 VOLTS)
  2. RATED CURRENT: 0.2 AMPERES OR LESS
  3. SOUND PRESSURE: 97±4 DECIBELS AT TEST VOLTAGES OF 14-28 VOLTS (AS MEASURED AT A DISTANCE OF 1.2 METERS AND AT A HEIGHT OF 1.2 METERS ABOVE THE GROUND)
  4. FREQUENCY: 1250Hz / 1150Hz ALTERNATING ± 200Hz AT TEST VOLTAGES OF 14-28 VOLTS
  5. INTERMITTENCE: 80±10 CYCLES PER MINUTE AT TEST VOLTAGES OF 14-28 VOLTS
  6. DURABILITY: CONTINUOUS 500 HOURS AT TEST VOLTAGES OF 14-28 VOLTS.
  7. RANGE OF OPERATING TEMPERATURE GUARANTEED: -40°C ~ 85°C
  8. SURGE VOLTAGE TEST: TO BE ABNORMALITY-FREE AS TESTED SUBJECT TO ISO7637 ITEM 3a, 3b, 5.
  9. CONFORMS TO: SAEJ1994.

- NOTES:**
1. FOR PRODUCT LABEL REFER TO LATEST REVISION OF DRAWING BE-002833-XX-14
  2. FOR GIBTBOX LABEL REFER TO LATEST REVISION OF DRAWING BE-002834-XX-14
  3. "R TRIANGLE" INDICATES CHANGES MADE TO REVISION OF DRAWING AS IDENTIFIED IN REVISION NOTES. 

**PROPRIETARY NOTICE**  
 THIS DESIGN AND TECHNICAL INFORMATION APPEARING ON THIS DRAWING IS THE PROPERTY OF BRIGADE ELECTRONICS, AND IS DISCLOSED IN CONFIDENCE. IT IS NOT TO BE COPIED, REPRODUCED, REVEALED TO OR EXPLOITED BY OTHERS, EITHER IN WHOLE OR IN PART WITHOUT THE EXPRESS WRITTEN CONSENT OF BRIGADE ELECTRONICS.



 Angle of Projection Third Angle	<b>Assembly Pt Approval</b> -		<b>Approved by</b> DKERAL		<b>Checked by</b> DKERAL		<b>Drawn by</b> DKERAL	
	<b>Status</b> RELEASED	<b>Units</b> mm	<b>Scale</b> N/A	<b>Released</b> 21/07/04	<b>Released</b> -	<b>Assembly Ref</b> DT-460		
<b>Part No</b> 1346		<b>BE-000386-01-06</b>						